

STI EMERGENCY CHAIR THEFT STOPPER®



PRODUCT OVERVIEW

Avoid theft of emergency chairs with this sturdy, tamperproof, self-contained device. It has proven highly effective in helping stop theft, misuse or vandalism of emergency chairs. Yet, it leaves the chair accessible for emergencies and does not interfere with the emergency process in any way.

HOW IT WORKS

If the protected chair is moved from its normal position, the device emits a piercing alarm. Also, the highly visible stop sign design and the words "STOP, EMERGENCY USE ONLY" discourages wrongful use. The device is easy to install and a deactivation cable is supplied for authorized maintenance of the chair or alarm. 9 VDC alkaline battery is included.

KEY FEATURES

General Information

- Highly visible "stop sign" design discourages wrongful use of extinguisher.
- Deactivation cable provided for service by authorized personnel.
- Three year guarantee against breakage of polycarbonate in normal use (one year on electro mechanical and electronic components).

Design

- Compact design 5.375 in. (137mm) in diameter and 2 in. (51mm deep). Mounts easily next to extinguisher.

Construction

- Virtually indestructible polycarbonate housing.

Installation

- Mounts easily next to emergency chair.

Electronics

- Sounds a powerful 105 dB warning horn when activated, drawing attention in a hurry (95 dB low volume setting can be set if desired).
- 9 VDC alkaline battery is provided.

STI Emergency Chair Theft Stopper®

Dimensions and Technical Information

MODEL AVAILABLE

STI-6202 Emergency Chair Theft Stopper

SPECIFICATIONS

Housing	1/8 in. Polycarbonate
Power Source	9 VDC Alkaline
Warning Horn at 1 foot	95 dB - Low 105 dB - High
Cable	1/8 in. galvanized steel 16 to 18 in. long
Dimensions	5.375 W x 5.375 H x 2 in. D 37 x 137 x 51mm
Standby Current	None
Alarm Current	40 mA at 95 dB 150 mA at 105 dB
Recommended Operating Temperature	32°F to 120°F (0°C to 49°C)

PRODUCT INFORMATION

This sturdy, tamper resistant, self-contained device helps prevent the theft or vandalism of emergency chairs. Experience has shown its highly visible "stop sign" design is an effective deterrent. The device contains a 9 VDC battery (included), a selectable 95 or 105 dB horn and a unique steel cable operated switch mechanism. When the emergency chair is removed, the galvanized steel cable is pulled out of the alarm and the horn sounds.

- Reduces theft of vital emergency chairs
- Reduces vandalism of emergency chairs
- Completely self-contained
- Lifetime warranty against breakage of polycarbonate housing

NOTE

Three year guarantee against breakage of polycarbonate in normal use (one year on electro mechanical and electronic components).

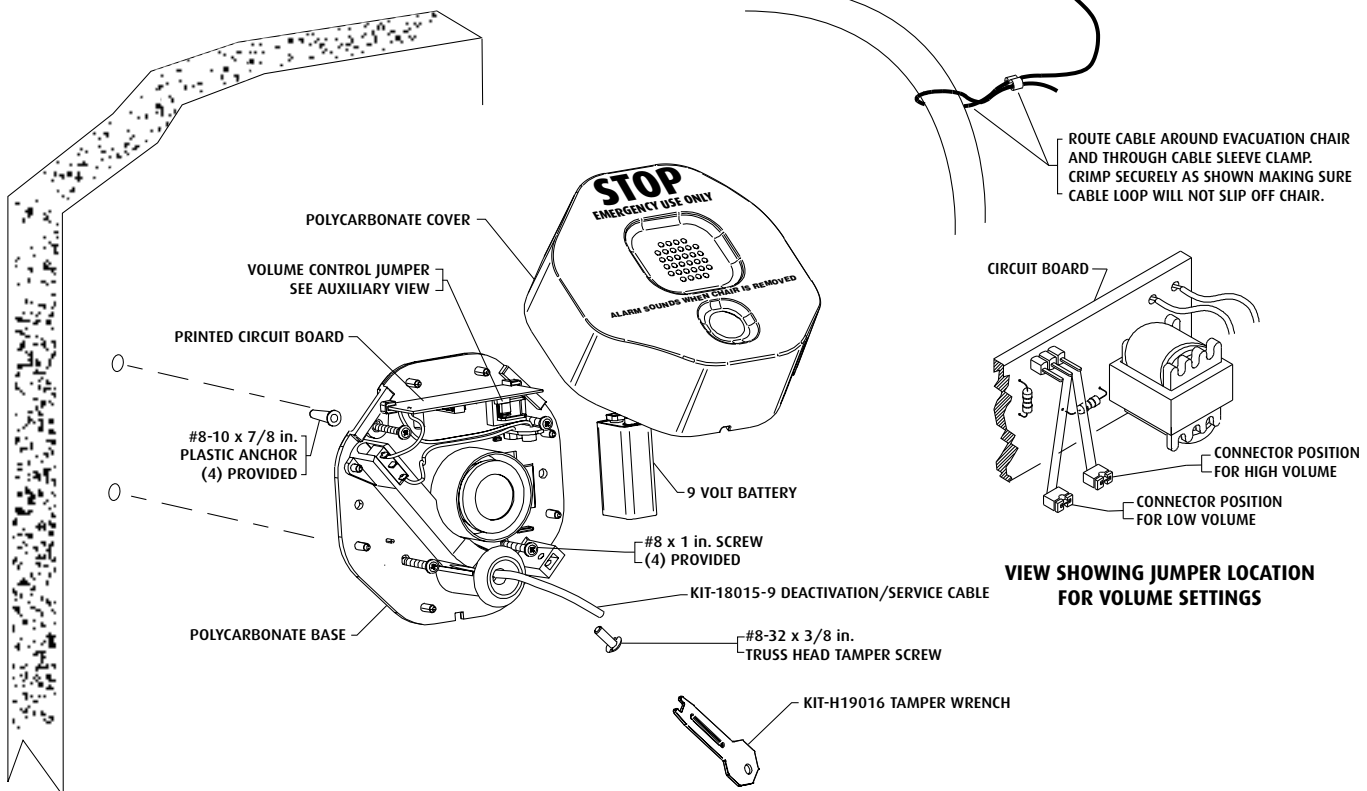
WARRANTY

Three year guarantee against breakage of polycarbonate in normal use.

THREAD CABLE INTO THEFT STOPPER
UNTIL CABLE BOTTOMS OUT
(TO TEST, SIMPLY PULL CABLE
AND HORN WILL SOUND)



ROUTE CABLE AROUND EVACUATION CHAIR
AND THROUGH CABLE SLEEVE CLAMP.
CRIMP SECURELY AS SHOWN MAKING SURE
CABLE LOOP WILL NOT SLIP OFF CHAIR.



**Safety Technology
International**

2306 Airport Road
Waterford, Michigan
48327, USA

Tel: 248-673-9898
Fax: 248-673-1246
Toll-free: 800-888-4784
info@sti-usa.com
www.sti-usa.com

Taylor House
34 Sherwood Road
Bromsgrove, Worcestershire
B60 3DR, England

Tel: +44 (0)1527 520 999
Fax: +44 (0)1527 501 999
info@sti-emea.com
www.sti-emea.com